

vertical steel

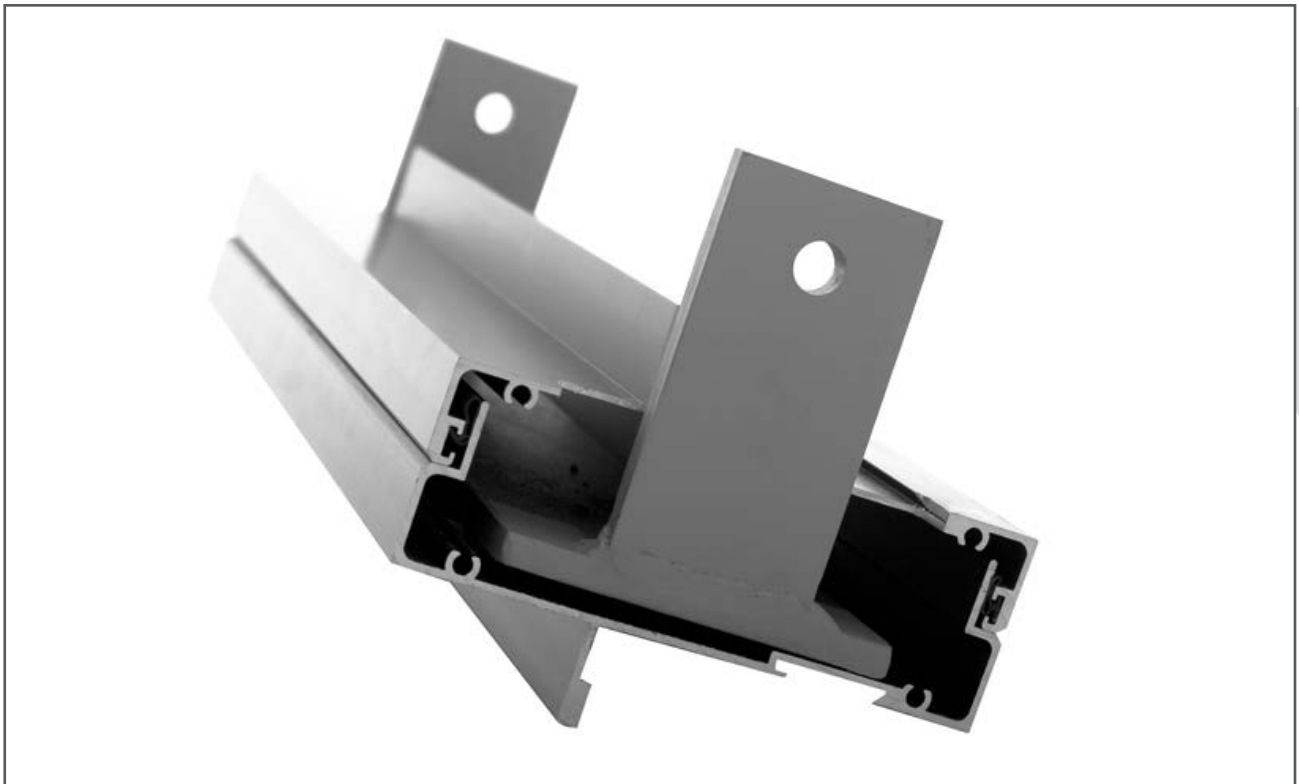


installation instructions



installation instructions

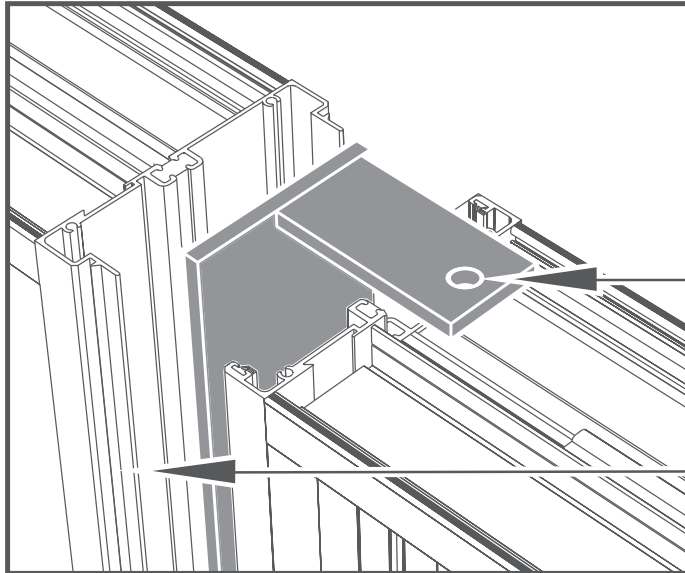
1. Reference 600 series window wall installation instructions for frame installation of Window A.
2. Once window A is plumbed and level in place, snap vertical steel into the hollow of male mullion extrusion (E658 or E858). Tabs should always face to the right of the installed unit but never face into a hinged door frame. A small amount of caulking or silicone can be applied between the steel face and the extrusion it rests against to counter any rattling that may exist after installation is complete.
3. Once steel is in place, anchor steel to the structure through the holes provided in the steel tabs using approved fasteners. Anchors are required in both the head and sill.
4. Run a small bead of silicone on exterior of both male legs of the mullion and place window B into place. Snap together using quick clamps or equal.
5. Once mullion is completely snapped together, level and plumb window section B and fasten per window wall instructions.
6. Repeat steps 2-5 as needed for number of units wide in your opening.



installation instructions

setup for thermal break condition

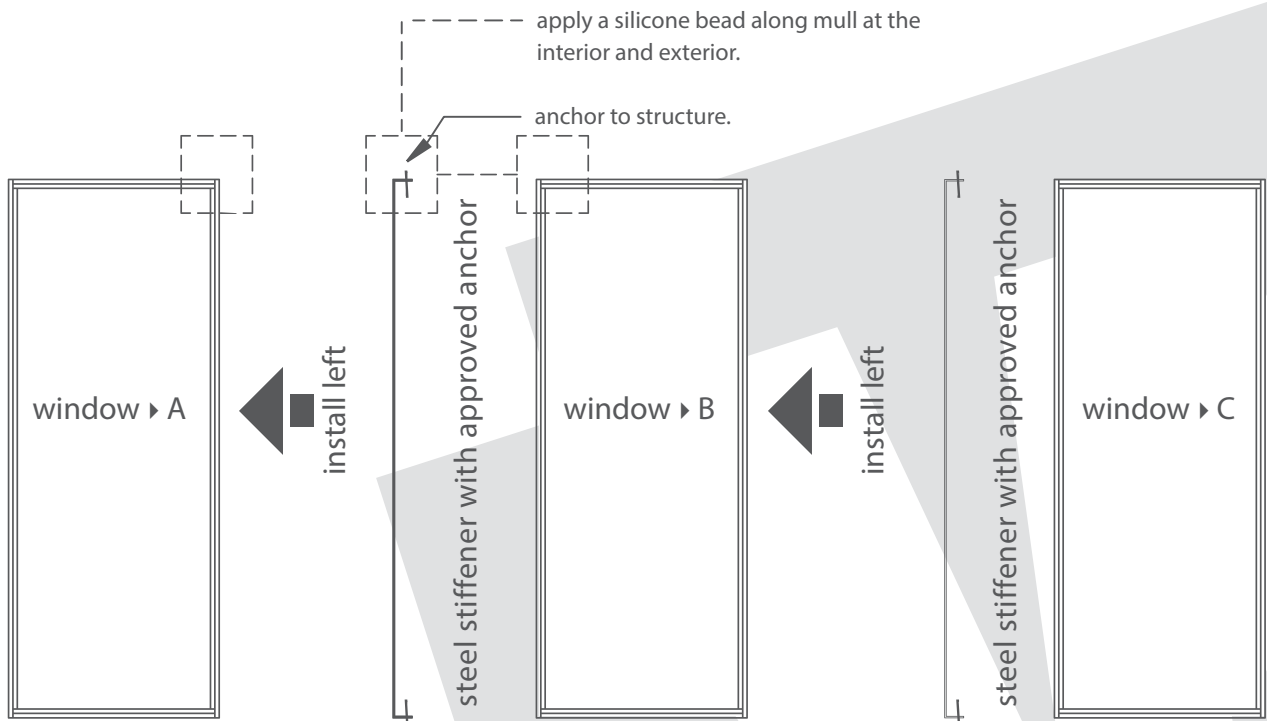
vertical mull configuration viewed from exterior



- ▶ steel stiffener provided by WWS
- ▶ stiffeners shipped loose
- ▶ approved anchors not provided by WWS

anchor to structure through stiffener tab hole with approved anchors.

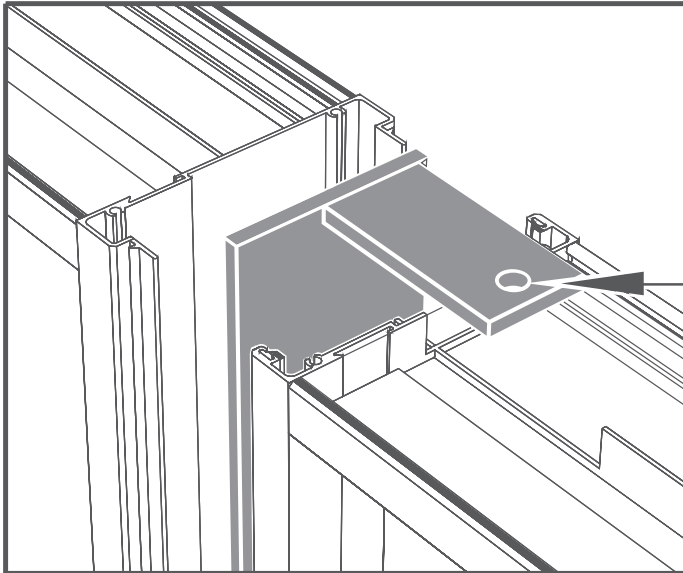
apply a silicone bead along mull at the interior and exterior.



installation instructions

setup for non-thermal break condition

vertical mull configuration viewed from exterior



- ▶ steel stiffener provided by WWS
- ▶ stiffeners shipped loose
- ▶ approved anchors not provided by WWS

anchor to structure through stiffener tab hole with approved anchors.

